

## MyChron5 - MyChron5 2T

USER GUIDE



**AiM Srl.**  
Via Cavalcanti, 8  
20063 Cernusco S/N (MI)  
Italia  
Tel. (+39) 02.9290571

[www.aim-sportline.com](http://www.aim-sportline.com)

Made in Italy



## MyChron5

- 02 GETTING STARTED
- 10 INSTALLATION
- 12 CONFIGURATION MENU
- 22 ON THE TRACK
- 26 DATA RECALL
- 30 WIFI CONFIGURATION
- 46 PC CONNECTION
- 50 TRACK MANAGEMENT
- 51 DATA DOWNLOAD
- 52 DATA ANALYSIS
- 54 NEW FIRMWARE AND SOFTWARE RELEASES
- 56 TECHNICAL DRAWINGS



## MYCHRON5

Twenty years ago we installed the first MyChron...

The original simple concept of a personal chronograph automatically showing lap times and other important information to the racer has remained the core of the system, that, in the meantime, has improved and improved till arriving to the now borning Fifth Generation.

Introducing now MyChron5, we are deeply grateful to all of you, that have followed us during all this time, in all the tracks of the world, in every category, in every country.

We are deeply grateful to all our dealers, distributors, friends that have spent their lives on the track, attending our systems, helping everybody to start using them, repairing them when they required to be repaired, giving us the important feedbacks that allowed us to improve them constantly in all these years.

Thank you.



## 1. MyChron5 in a few words

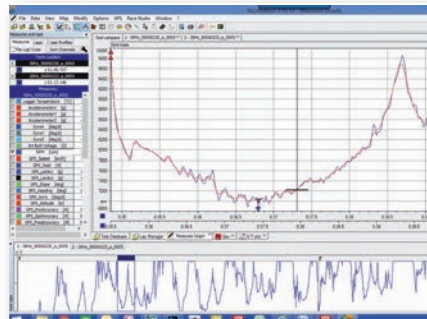
MyChron5 is a gauge designed for being installed on a kart.



### It reads and records:

- RPM at low or high frequency (up to 50 times per second) from the spark cable

- One or two temperature values (depending upon the model). They can be exhaust gas, underspark, or water temperatures.



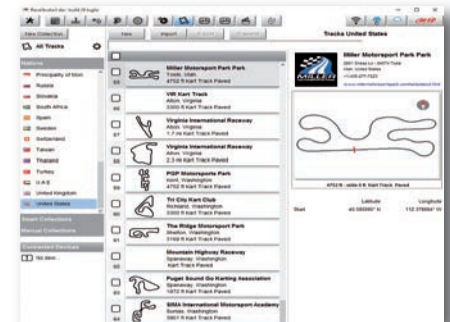
- All parameters coming from the GPS/Glonass constellations: speed, position, lateral acceleration and time of day with precision of one millisecond.

The receiver has been tuned for our sport, so it accepts all the strong lateral and linear accelerations, change of direction and vibrations without any problem, always giving a perfect result ten times per second.



MyChron5 uses the GPS and Glonass data for calculating the lap time. It comes with more than 1500 tracks in the internal database, so it automatically recognizes the track in which you are racing, it knows the position of the starting line and eventually of the split points and can calculate the lap/split times with a high precision.

All these data are stored in a huge 4GB internal memory, enough for recording your data for thousands of hours.

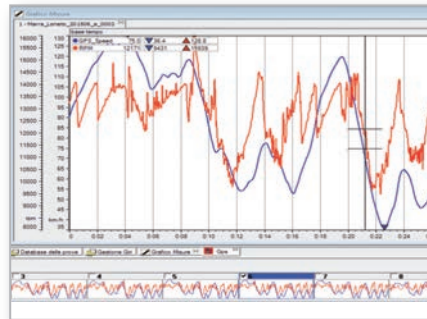




You can download your data to your PC using a WiFi connection.



Then, you can analyze your data using the worldwide, well-known RaceStudio software, freely downloadable from our website [www.aim-sportline.com](http://www.aim-sportline.com).



The display is a wide LCD display with an RGB backlight that you can easily configure. By the way, the backlight automatically turns on when the ambient light is low, thanks to a dedicated light sensor.



There are two RGB alarm LEDs: you can configure the color, blinking frequency and event to which to connect them.

Finally there are five RGB shift lights that you can configure for helping you in gear changing, better RPM monitoring or lap time indicators.

Power comes from the internal battery or, as an option, from the external power supply.

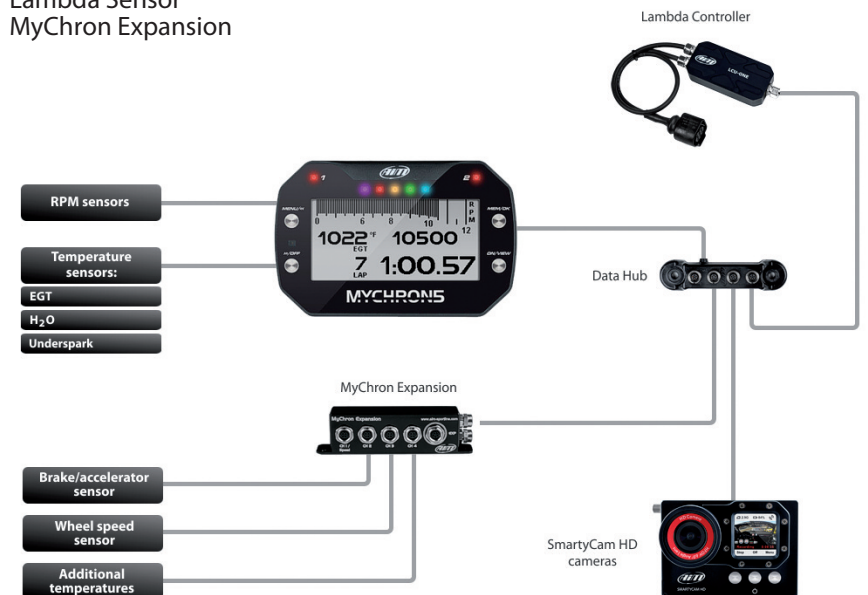
The battery is included. It is a huge, removable three-amp lithium ion rechargeable battery, which comes with a battery charger.

It powers your system for ten hours.



**MyChron5 is expandable: you can connect to the CAN bus:**

- SmartyCam HD
- Lambda Sensor
- MyChron Expansion



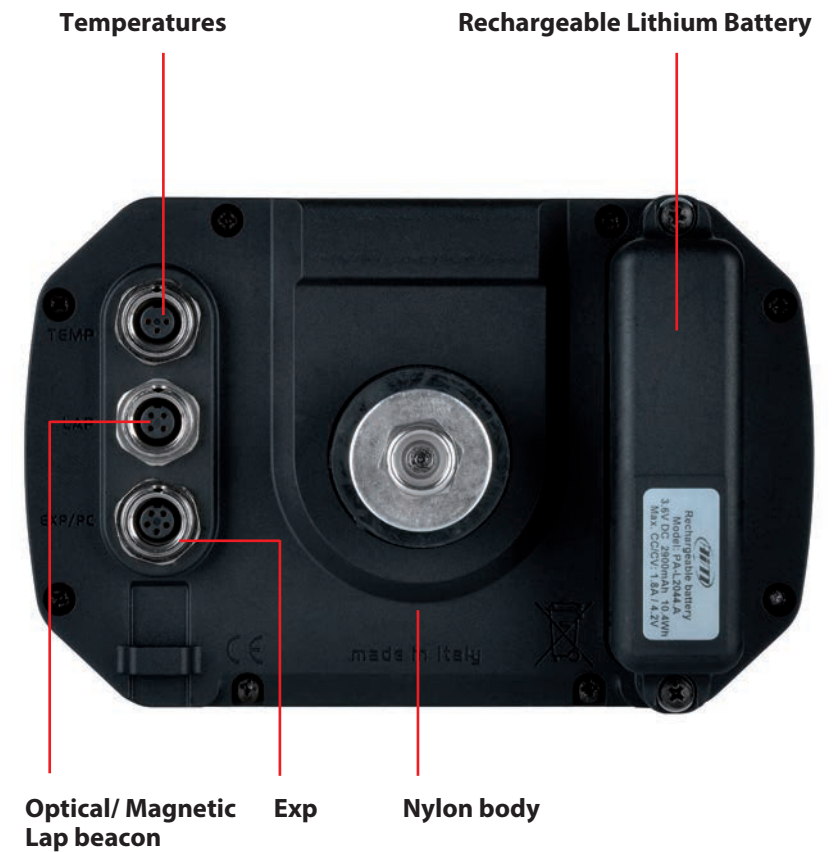
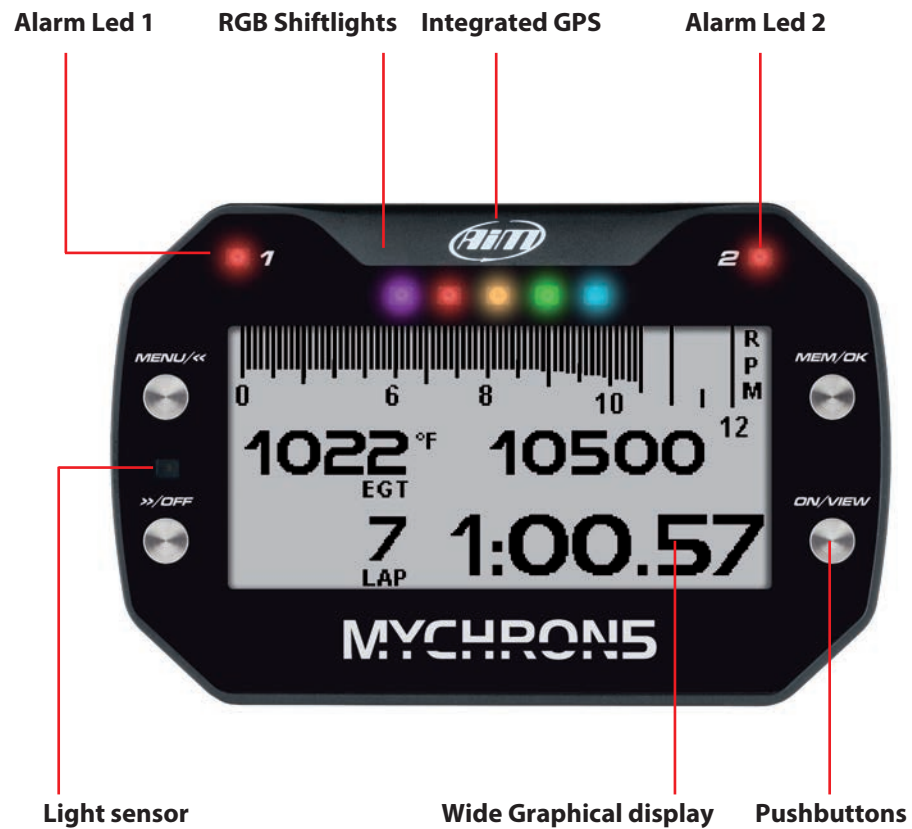


## 2. What is in the kit?

- 1 MyChron5 gauge
- 2 RPM cable
- 3 Temperature sensor
- 4 Battery Charger with cable



## MyChron5



## 2. Installation

Your MyChron5 has been designed for being installed on the steering wheel of your kart. In order to reduce vibrations to your MyChron5, please mount the rubber washer above and under the spoke of the steering wheel, as shown the picture below:

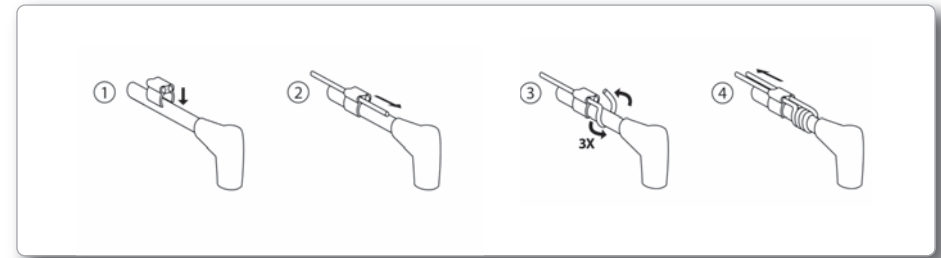


## Temperature sensor Installation



## RPM Clip Installation

A clean RPM signal is key to good performance from your MyChron. To get a clean signal, it's important that the RPM lead be installed correctly in order to pick up a strong signal from the plug wire.



*MyChron Mike, a true legend in the karting community.*



"Do not run the RPM lead in any type of tubing; it should be run right along the frame rail.

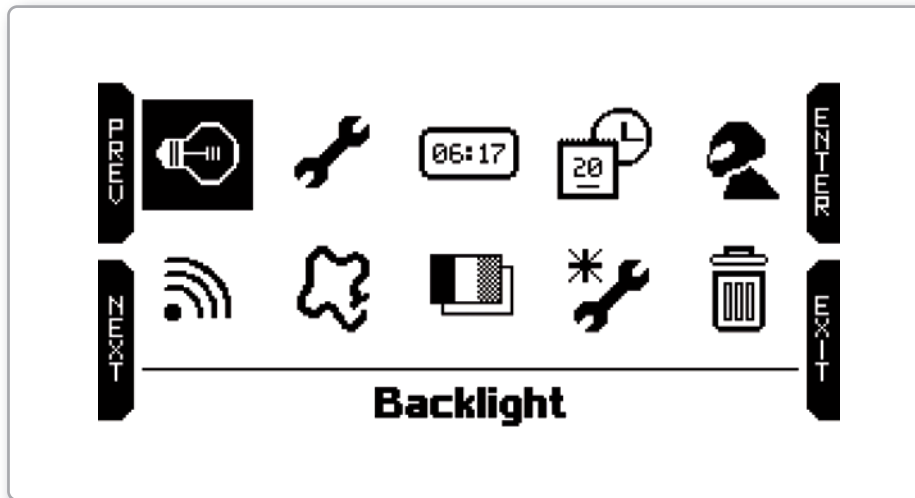
Take care not to overtighten the tie wraps. If your lead is too long, don't coil it up; just cut the tach end to length. At the tach end, make sure that the lead loops through the two small holes and then extends out about half an inch and then use a small tie wrap to keep it snug.

It is very important to pull the RPM wire about four inches through one side of the clip then wrap the wire around your plug lead a couple of times and back through the opposite side of the clip."

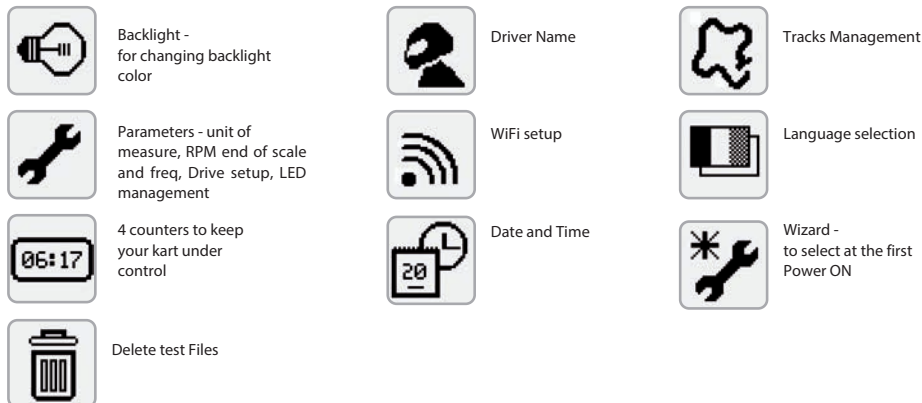


### 3. Configuration Menu

Before using your MyChron5, don't forget to set some parameters, as explained below. You can enter the Configuration Menu by pressing the **MENU** button.



The icons have the following meanings:



### 3.1 Wizard

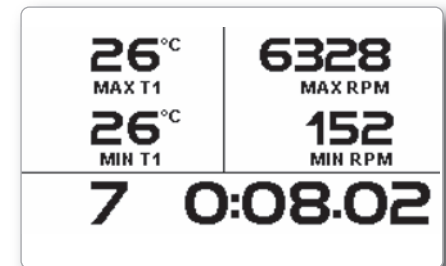


The Wizard icon helps you to set the most important parameters of your new MyChron5:

- Language
- Temperature unit (Fahrenheit or Celsius)
- Speed unit (mph or Km/h)
- Maximum RPM
- Drive type (direct drive, clutch, gearbox)
- Type of race: Road Racing or Oval.

The difference between road racing and oval is in the information the driver sees when passing in front of the starting line:

■ In Road Racing MyChron5 shows:  
Lap time, Max RPM and Max speed in the lap.



■ In Oval racing MyChron5 shows:  
Lap Time and RPM drop ( difference between max and min RPM)



By scrolling through the icons, you can easily set all the required parameters. Only a few of them require some deeper explanation.

## 3.2 Backlight



You can set the backlight to on, off, or automatic. In this last case, the light sensor positioned on the front left of your MyChron5 turns the light on or off depending on the external light level.

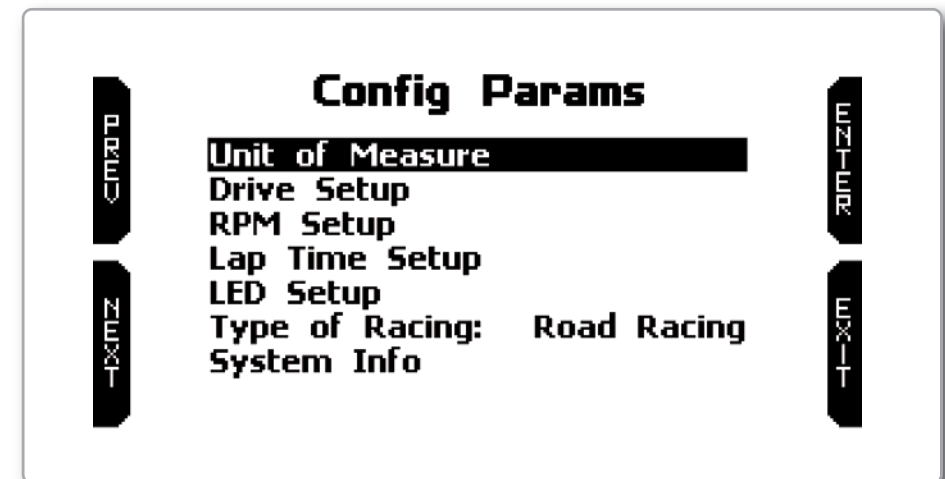
Here, you can also change the backlight color, choosing among six different possibilities.



## 3.3 Parameter Configuration



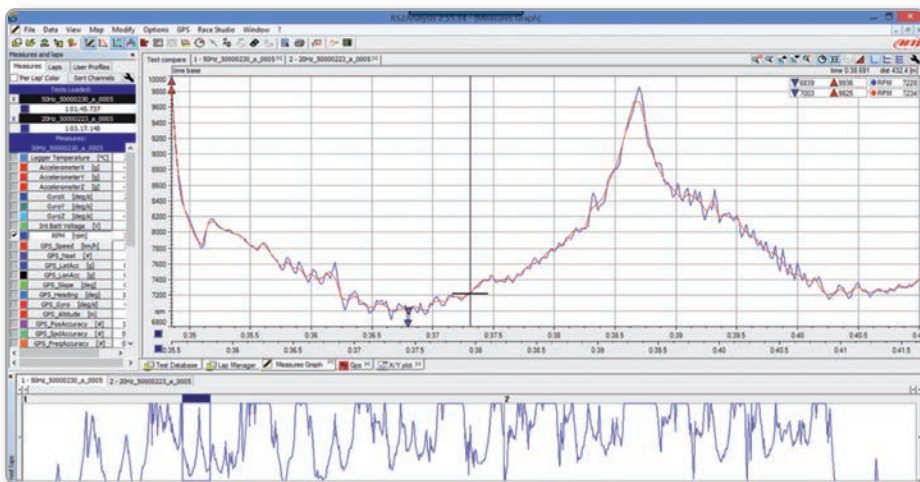
Please select the Param Config icon for setting the general purpose parameters.



Through this page you can set:

- Unit of measure for speed (Km/h or mph) and temperature (Celsius or Fahrenheit)
- RPM end of scale
- Lap setup
- Temperature frequency: 20 or 50 Hz
- Water temperature alarm
- EGT alarm

RPM frequency: RPM can be read 20 or 50 times per second (20 or 50 Hz), in dependence upon your necessities:



20 samples per second let you have a cleaner signal, and make easier to see the RPM trend, while 50 samples per second let you better recognize the vibration of the chassis and all the strengths that can create problems to the ideal movement of your kart.

In the above picture you can see both data, at 20 and 50 Hz, in order to note the differences in acquisition.

The Lap Time setup brings you to the following page:

## LAP SETUP

PREV

Lap Show Time: 3 sec

Lap Show Type: Static

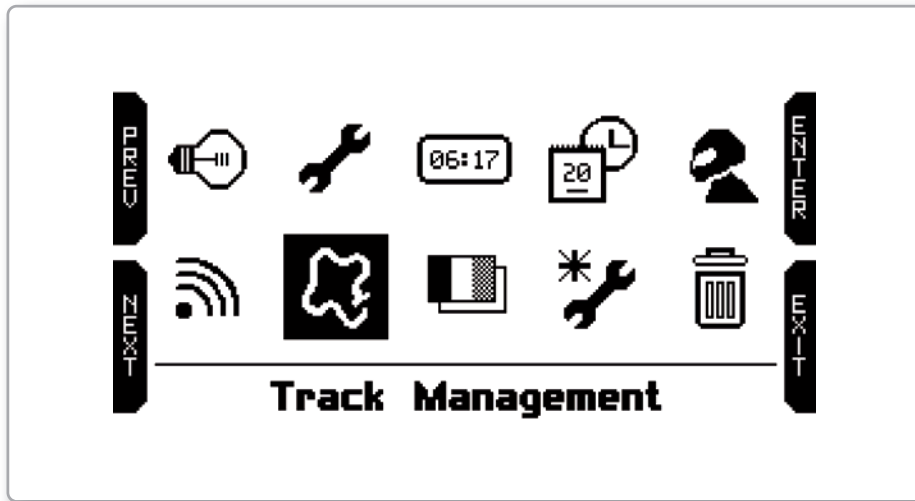
NEXT

Lap show time can change between:

- static
- rolling
- - +/- best
- predictive



### 3.4 GPS and Track Management



The GPS receiver inside your MyChron5 is very useful for a good amount of reasons:

- Lap Time calculation
- Speed calculation
- Predictive lap time calculation
- Position on the track analysis
- Lateral g-force calculation

Clearly, for a proper calculation of these information, the system needs to have some information about the track:

- coordinates of the starting line
- coordinates of the eventual magnetic strips
- length of the track

Your MyChron5 comes with the information about a good number of kart tracks already available in it.

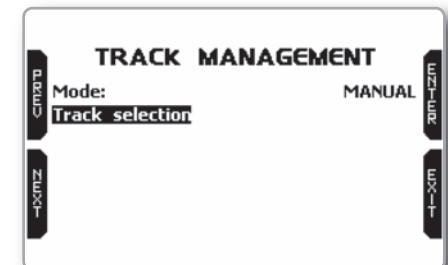
Our technicians are constantly working to upgrade the database, and new releases of it are freely downloadable using the Race Studio 3 software.

If you need to upgrade the track information in the gauge, please refer to **chapter 8**

After selecting the Tracks icon, you enter into the Track Selection Menu:

MyChron5 offers two selection modes:

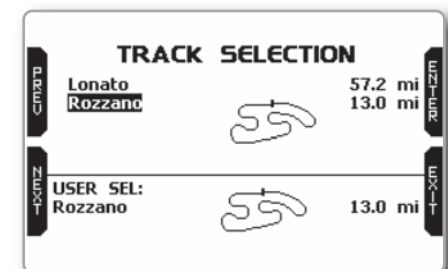
■ **Automatic:** MyChron5 automatically recognizes the track in which you are running, gets the coordinates of the starting line and, eventually, of the magnetic strips and is ready for calculating lap and split times without the magnetic/optical receiver. This mode is to be preferred most of the times.



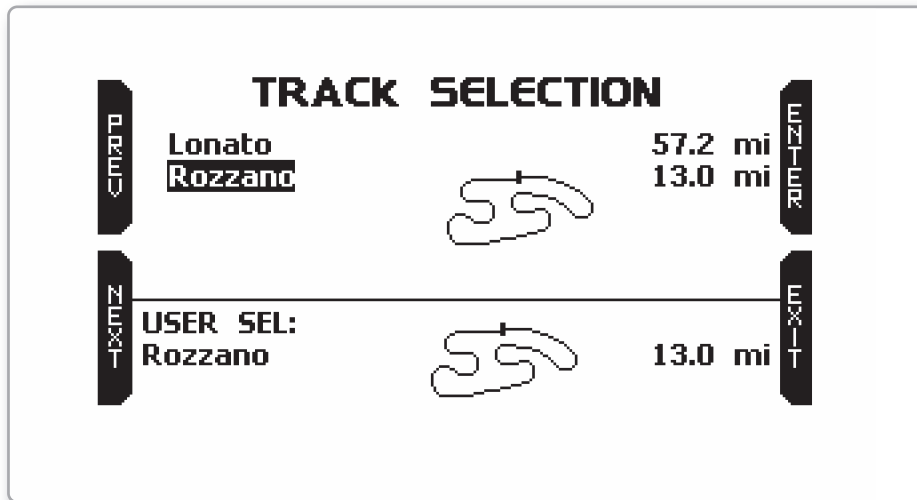
■ **Manual:** Allows you to select the desired track from the internal database. The manual mode is to be preferred when there are different track configurations nearby.

In this case, the MyChron5 would anyway understand in which circuit you are racing, but it would require at least one lap. If you wish to have everything set from the first lap, the manual mode will help you.

If you select the manual mode, you have to select the track. Click on Track Selection, and this page will appear:



The tracks in the dbase are shown in the upper part of the display. The nearest are shown first. You will see the name of the track, the shape, and the distance from where you are. In the lower part of the track, the selected track is shown.

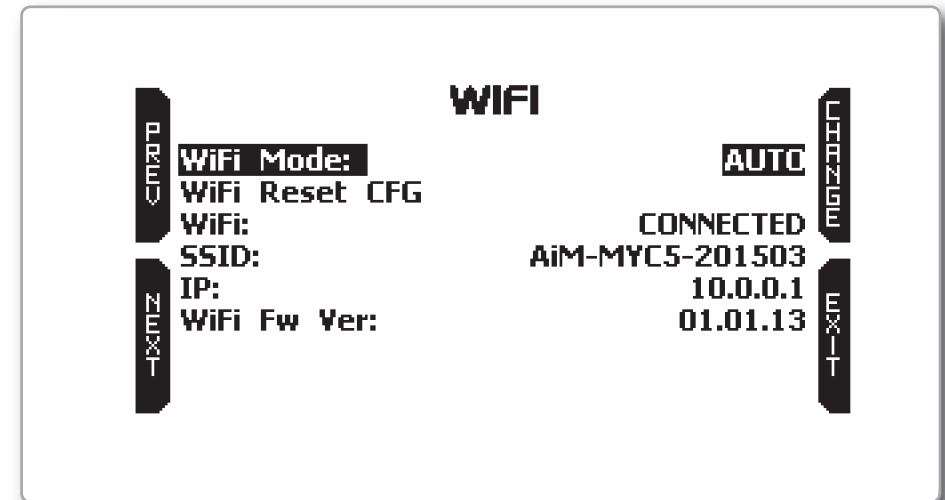


Please, note that, in case you run on a kart track that is NOT described in our track database, MyChron5 enters into an "Apprentice mode", doing the following steps

- It starts recording the different points of the track
- As soon as it realizes that it is passing from a point where it has already passed by, it understands that the circuit is closed and sets a temporary Starting Line, showing the lap time every time the kart is passing from that point.
- This new map can then be stored into the MyChron5 database and the starting line coordinates can be eventually modified. The name of the track can be added too and it can be transmitted to the PC at the first PC-MyChron5 connection.

### 3.5 WiFi Setup

Please select the WiFi icon and enter the WiFi setup page.



#### ■ WiFi mode

Has three options: **AUTO**, **ON**, **OFF**.

In **AUTO** mode, the MyChron5 turns the WiFi module on when the kart is not moving and turns it off when the speed is higher than 10 km/h.

In **ON** mode, the WiFi module is always active, while in **OFF** mode, it is always disabled.

#### ■ WiFi reset

CFG resets the WiFi module to the default values

## 4. On the track

Some pages are available for the online data visualization. You can scroll them by pushing the **VIEW** button. Depending on the configuration of your MyChron5 (gear presence, expansions, SmartyCam connection), the pages may change.

At least three pages are always available:

### ■ Track Selected Page:

This is the page that appears as first, when you turn your MyChron5 on.

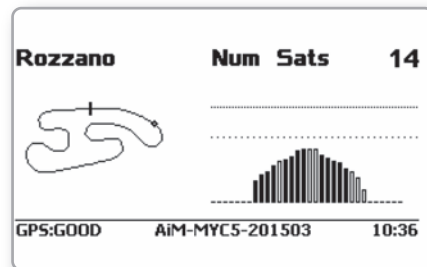
When the kart is moving, it automatically disappears and is not available.

It shows:

■ On the left, the map track is selected.

It is possible to select a different track manually (menu/tracks) or automatically.

■ On the right, the satellite signal bars show how many satellites are visible and the level of each signal.



### ■ Bar Graph Page:

It shows:

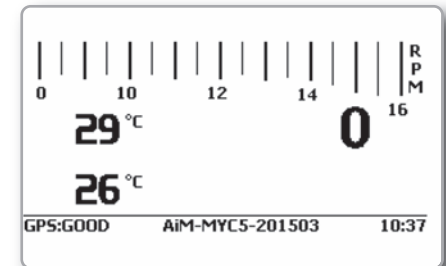
- The RPM bar graph. The range is set in the SET PARAMETER page.
- RPM value on the right of the display
- Temperature(s) value on the left side of the screen
- Lap time information. It can be static lap time, rolling lap time, or predictive lap time. In any case, the lap time is shown for a certain number of seconds and set in the menu.

In the lower part of the display, a row that will disappear during the test shows:

- GPS status
- Serial number.

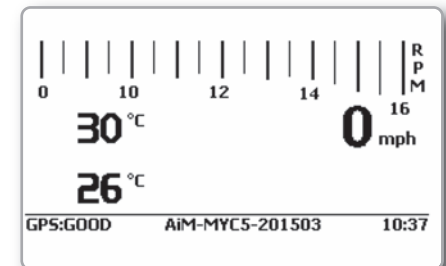
This information is useful if you wish to connect your MyChron5 to your PC via WiFi.

■ Time of the day



### ■ Bar Graph Page with Speed:

This is similar to the previous one but with speed (km/h or mph) shown on the right.







## 5. Data Recall

After having finished your test, you can review the data by pressing the **MEM/OK** pushbutton.

These two pages don't appear if you have just finished your test; in this case, you see the following on the first page:

If your last test was at least one day ago, you can enter the summary page:

TEST SESSIONS	
27/09/2015: Rozzano	
26/09/2015: Rozzano	
25/09/2015: Lonato	

27/09/2015 13:31					
Lap	Best	Laps	RPM	mph	T2
7	0:50.06	14008	67	61	59
		7234	31		
9	0:50.08	13963	67	60	58
		6953	29		
11	0:50.13	14085	67	59	58
		6811	31		

It shows the best three laps of your test, giving the information about maximum and minimum RPM, speed, and temperature(s) for them.

There, you can select the day of the test you would like to examine. After selecting the day, you can select the test:

25/09/2015: Lonato	
15:10 6 0:42.07	15:01 10 0:42.73
14:01 10 0:42.68	12:42 5 0:42.51
	12:40 3 0:43.02

By pushing **NEXT**, you get:

Best Lap: 7 0:50.06	
#	Split times
1	0:18.98
2	0:18.22
3	0:12.84

It shows the three split times for the best lap.

In every square, you can read the time of the test, how many laps, and the best lap time.



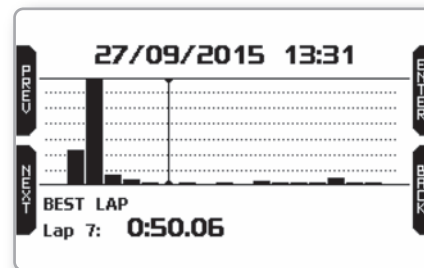
Then, you get:

It shows the split times for the best lap, the best rolling lap, and the theoretical best lap.

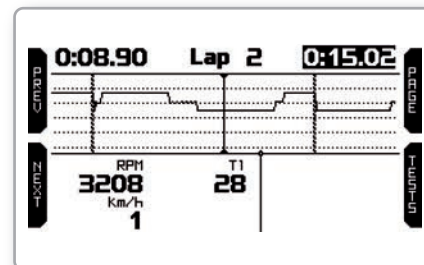
Best Lap: 7 0:50.06				
#	Split times	Lap	Rolling	Lap Theoretic
1	0:18.98	14	0:18.96	14 0:18.96
2	0:18.22	13	0:18.29	7 0:18.22
3	0:12.84	13	0:12.77	13 0:12.77
	0:50.06		0:50.03	0:49.96

Next page:

This is a summary of the whole test, showing the graph of the lap times. You can move the cursor left and right to view the lap time information for all laps.



By pushing **ENTER**, you can see the RPM graph for the desired lap.



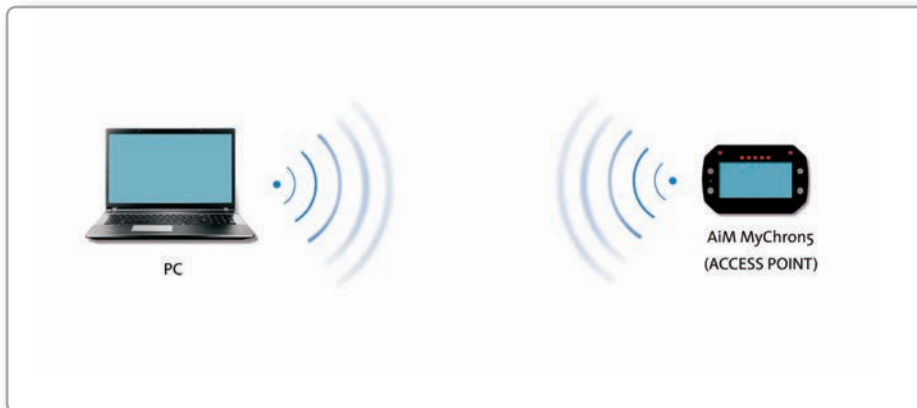


## 6. WiFi Configuration

WiFi connectivity is **disabled** by default in your MyChron5 and must be enabled on the device menu.  
Your MyChron5 can be configured for WiFi communication in one of two ways:

### 1) As an Access Point (AP)

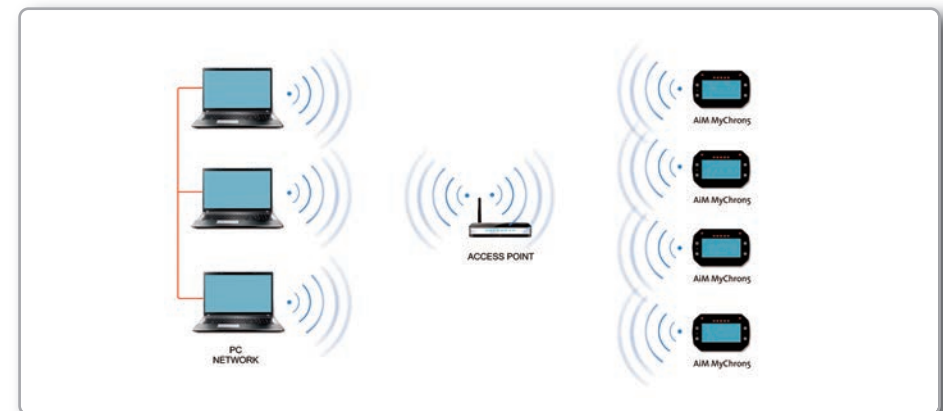
This is ideal when you have one device and one computer.  
In this configuration, your AiM device creates its own WiFi network, which acts as an AP to which you can connect with your PC.



### 2) To join an Existing Wireless Local Area Network (WLAN)

This is more complex and requires an external AP but is more flexible and powerful.  
In this way, you can communicate with more than one device and with more than one PC on the same network.

In this configuration, both your MyChron5 and your PC have to join a pre-existing WiFi network, called WLAN, in order to communicate with one another. The network is now created by a network device, which is acting as an external AP by permitting the device's connectivity.



When a MyChron5 is working in WLAN mode, there are two layers of security available:

- Network authentication: the network password
- Device authentication: a unique device password

Using both network and device authentication allows for various security strategies where multiple people, PCs, and AiM devices are involved. For example, a PC on a WLAN may see several AiM devices but can only communicate with the AiM devices for which it has the password

## 6.1 Configuring Your MyChron5 as an AP

Follow these steps to create an AP, allowing you to connect your PC to your MyChron5 via WiFi. This is the most simple and direct WiFi connection method and is ideal when you wish to communicate with only one MyChron5 using one PC.

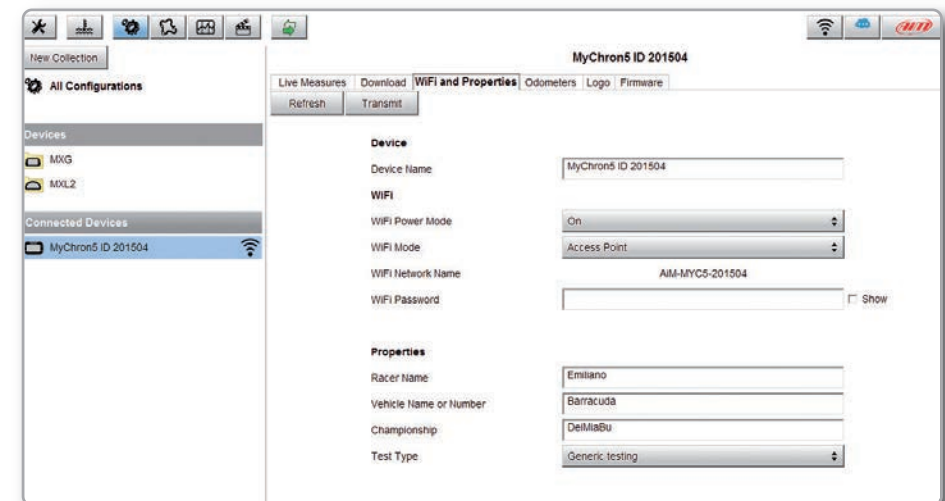
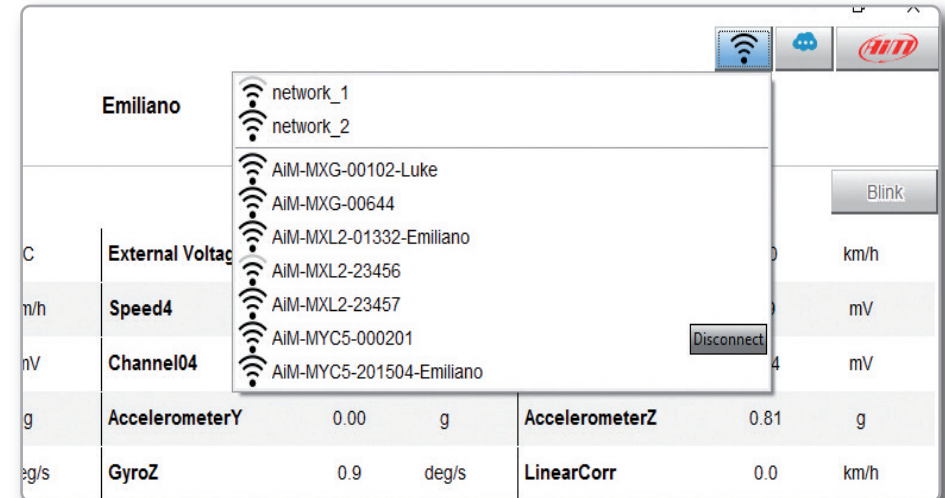
Your MyChron5 as a default, is configured as an Access Point and creates a network, without a password, completely accessible to everyone.

So, for establishing the WiFi connection:

- Be sure your MyChron5 has the WiFi enabled
- Read the name of your MyChron5, available in the lower row of the OnLine Page:
- Click on the WiFi Icon of RaceStudio3 and select your MyChron5:

**AIM-MYC5-201503**

In a few seconds the communication will be established.



For setting other parameters it is therefore recommended that you create a unique password to secure your device/network immediately. With the use of a password, the communication is secure and encrypted using the WPA2-PSK standard

The name of this AP, or SSID, is unique to your device.

An example name is:  
**"AiM-M5-054321"**

Whereas:

- "AiM" is the prefix for all AiM devices;
- "M5" is type of system identifier; and
- "054321" is a unique serial number for your device assigned at the factory.

To make your device more recognizable, you can append a friendly name to the SSID. There is a limit of eight characters.

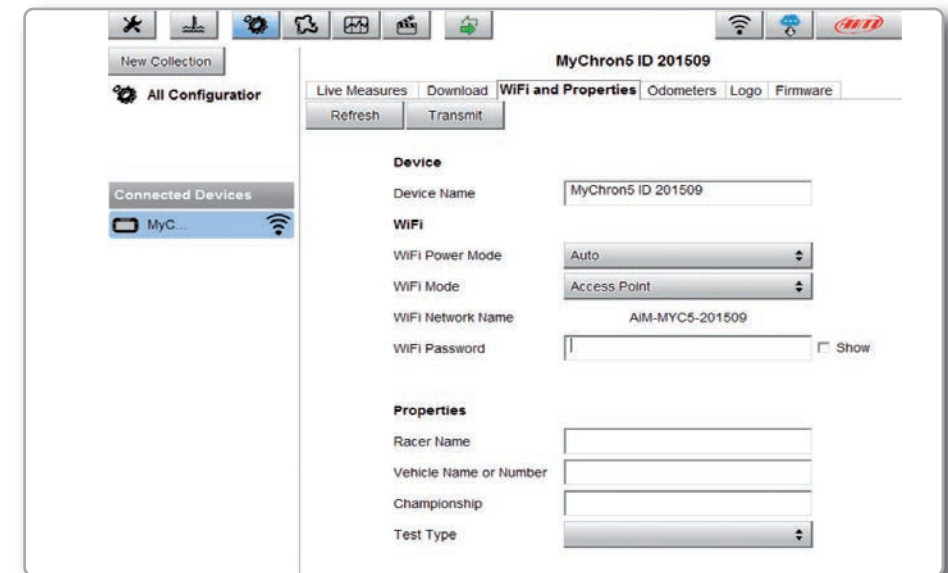
For example, if you add the driver's name, Tom Wolf, the resulting network name (SSID) will be:

#### **AiM-M5-054321-Tom Wolf**

After having set all the parameters, click the Transmit and Restart button. Your MyChron5 will restart and be configured with the new parameters.

To connect to your MyChron5, simply choose your device's name from the dropdown list of available WiFi connections from within Race Studio 3.

If your MyChron5 is protected by a password, as recommended, RaceStudio3 will then require that password to authenticate.



Please note that it is also possible to make the same WiFi connection using the WiFi tools of your operating system.

## 6.2 Joining Your MyChron5 to an Existing Network

In this scenario, both your MyChron5 and PC join an existing WiFi network (WLAN).

This scenario is ideal for a race team with multiple drivers and crewmembers and it is desired to communicate with one or more AiM devices using the same PC network. Note again that each MyChron5 can have a unique password, which is in addition to the network password, thus adding an additional layer of privacy and security.

Race Studio 3 will display any and all MyChron5 devices connected to the same network as the PC. Connected devices can be seen under the Connected Devices header, just as if they were connected via USB: simply click on your device in the left pane under Connected Devices.

Go to the WiFi configuration tab and set the mode to Existing Network.

Then, enter the network password and the device password, should you choose to add one, in the appropriate fields.

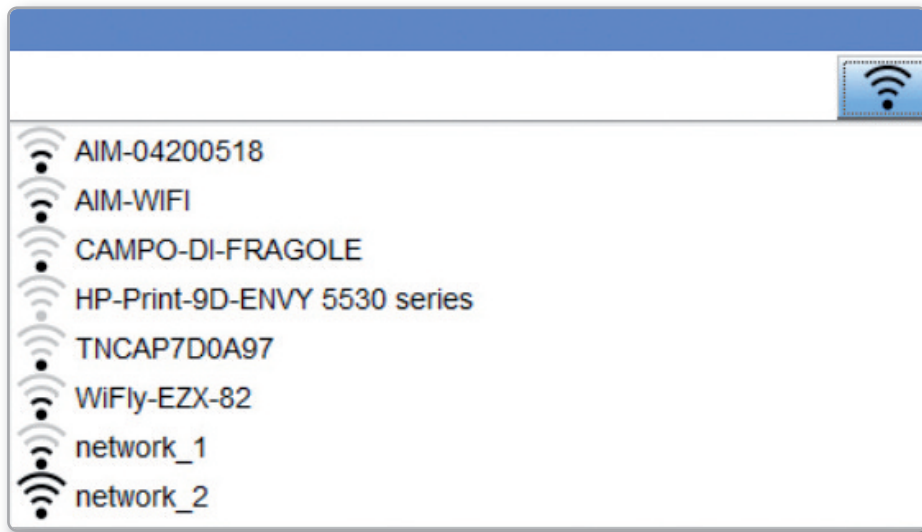
To commit the network settings to your device, click the Transmit and Restart button on this same tab. Your device will restart and join the network you specified.

Connect your PC to the same network, and you will see your device under Connected Devices, just as when connected via USB.

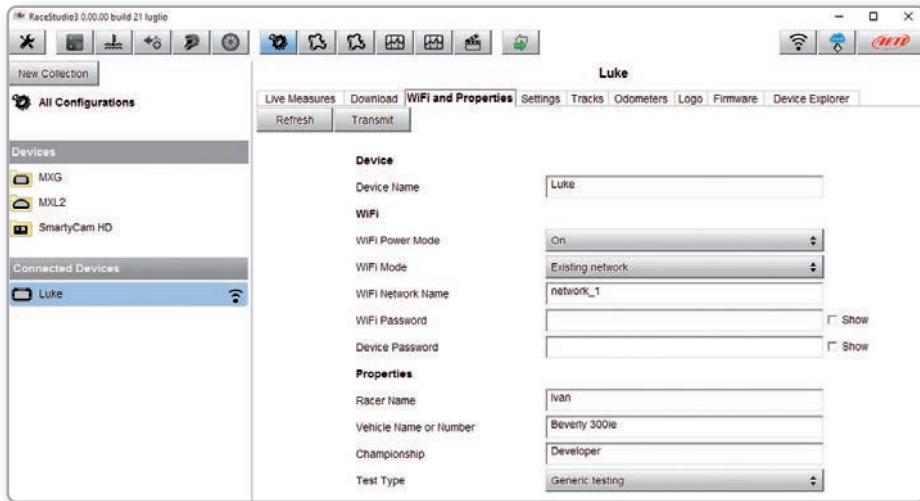
If the AiM device is connected to your PC using a WLAN, it is possible to have two different passwords: the device password, which was already described, and the network password.

Please note that only passwords following the WPA2-PSK code are admitted.

Once the WiFi authentication with the device has been established, users can interact with the device by clicking on it.



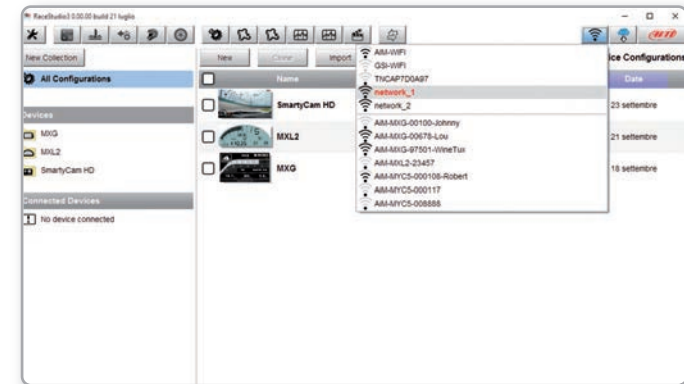
In order to accomplish these tasks, Race Studio 3 has to be used as clarified in the following figure.



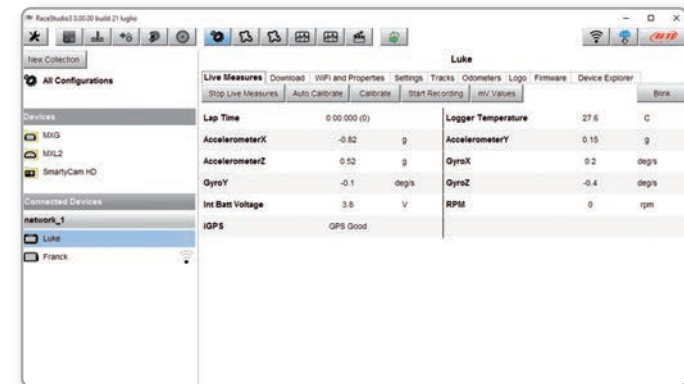
As you can see by the picture above, one device called "MyChron5 ID 43008208" is switched from AP mode to WLAN mode.

The network name is "network\_2," and it is not working in open authentication mode since it is protected by a network password.

In order to get the connectivity to the device, the user's PC also has to be authenticated to the same network, as clarified in the following figure.



Once the user's PC is authenticated to the same network called "network\_2," it can see the AiM device previously configured to gain access to the target network.



In the previous picture, two AiM devices are connected to the WLAN network\_1.



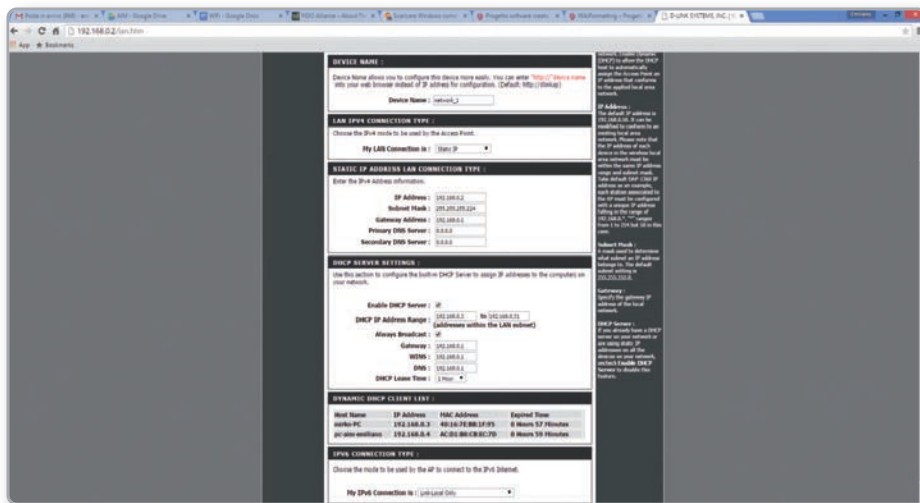
## 6.3 High-Performance WLAN Setup

This chapter reports a basic description of one WLAN configuration having AiM devices and a user's PC on it.

This guide suggests the use of a Linksys AS3200 device as the network device in order to provide a WLAN. However, you can use any other network device that has at least both one 3x3 MIMO and one DHCP server.

Moreover, in order to maximize the bandwidth, the Internet should not be allowed through this WLAN. Hence, the DHCP server has to be configured without both DNS and default gateway addresses.

A typical example of configuration is shown in Figure 10.



As you can see by the picture, the network device configuration parameters are the following:

### ■ Wireless network name: **network\_1**

(It states that the network name belonging to the WLAN is "AiM-WLAN." Hence, one user's PC needs to be authenticated to this network in order to interact with any AiM devices on this network.)

### ■ Gateway address: **192.168.0.1**

Primary DNS server: 0.0.0.0

Secondary DNS server: 0.0.0.0

(These settings prevent internet connectivity through this WLAN.)

### ■ Subnet mask: **255.255.255.224**

Enable DHCP server: yes

DHCP IP address range: 192.168.0.3 to 192.168.0.31

(These settings enable a DHCP server running on this WLAN. It gives IP addresses belonging to the range: 3-31. Hence, 29 network hosts are permitted on this network.)

The number of network devices on one WLAN depends on the subnet mask. This guide suggests the use of the following network masks and IP address range:

Subnet mask:	IP address range:	Number of devices:
255.255.255.0	192.168.0.1 - 254	254
255.255.255.128	192.168.0.1 - 126	126
255.255.255.192	192.168.0.1 - 62	62
255.255.255.224	192.168.0.1 - 30	30
255.255.255.240	192.168.0.1 - 14	14
<b>255.255.255.248</b>	<b>192.168.0.1 - 6</b>	<b>6</b>

**The bold one** is the configuration we suggest (if a greater number of devices is not needed), as it makes it easier and quicker for RaceStudio3 to identify devices on the network.

## 6.4 About Internet Connectivity

For optimal network speed for your AiM device(s), we have recommended not allowing an internet connection on the same network and have provided WLAN settings that prohibit an internet connection.

Please know that it is certainly possible to allow internet access on the same network as your AiM device(s), but doing so can degrade the performance of AiM device communication.

These slightly slower network speeds may be suitable for your needs.

Also note that it is possible to have a second WiFi connection by means of additional hardware (NIC).

Such a configuration would provide optimal data network speed for your AiM device(s) and simultaneously provide internet access via the second NIC.

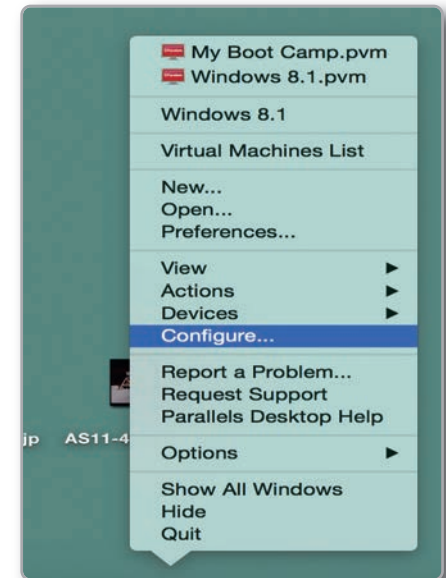
## 6.5 Working with Mac(™) OS and Virtualized Windows(™)

Race Studio software runs exclusively on Windows operating systems, but also if the OS is virtualized on an Apple iMac OS.

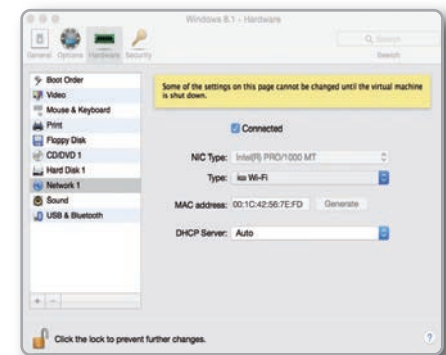
The main issue in this case is that the host OS (Mac) shares the WiFi interface with the virtualized OS (Windows) not as a WiFi interface but as an Ethernet interface.

### Configuring Parallels(™)

Choose the “Configure...” menu from the Parallels icon.

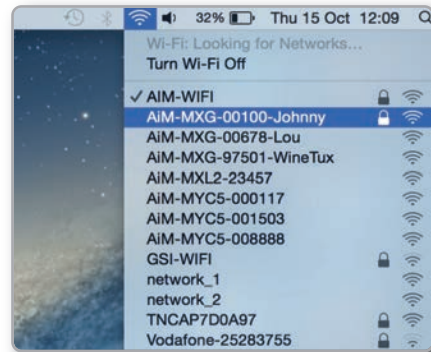


In the window you're prompted, choose the Hardware button at the top then the Network line at the left. In the right configuration part, be sure to choose Wi-Fi in the Type field.

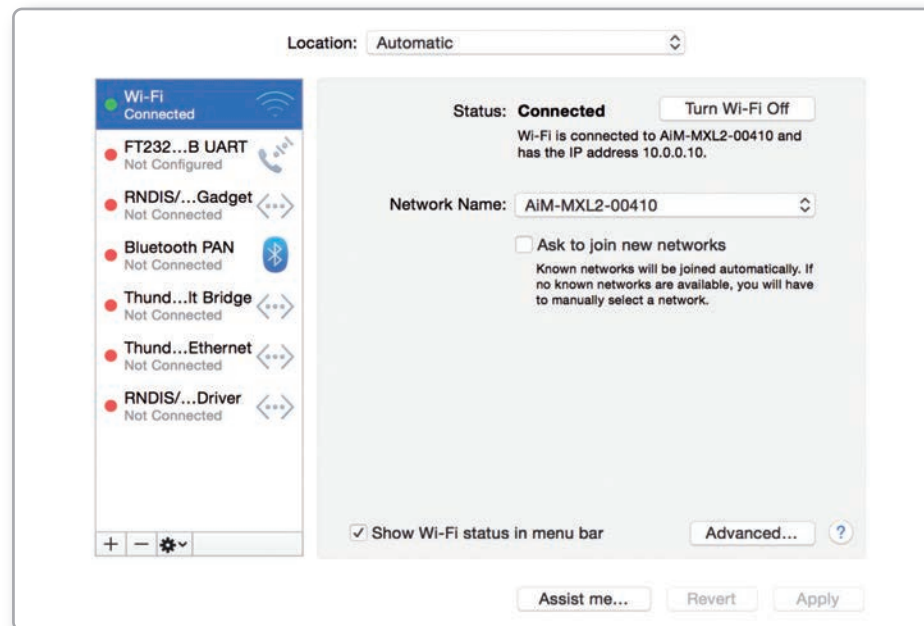


Then, choose the device you want to communicate with.

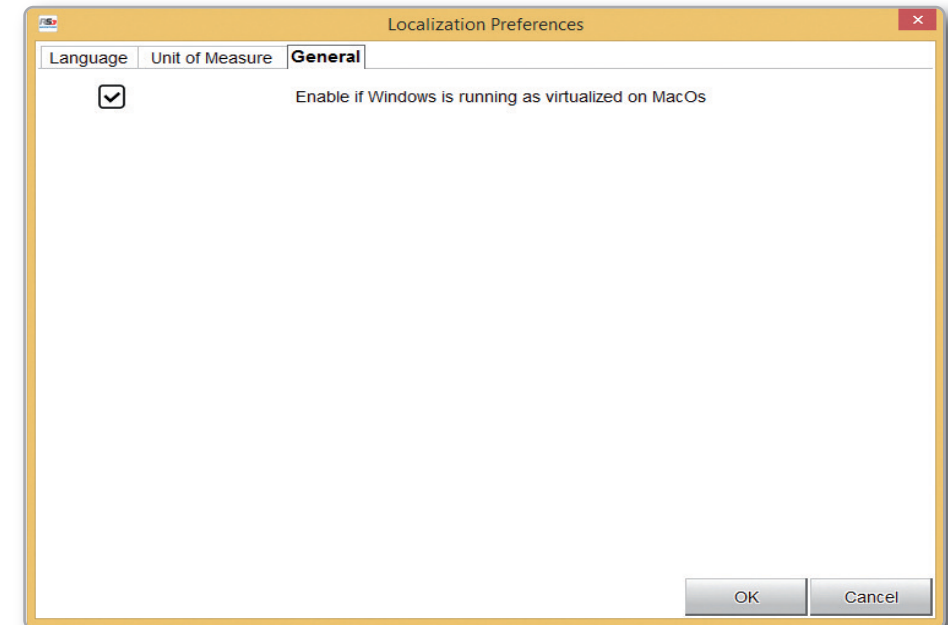
If you want to be sure the communication is working, choose the “Open Network Preferences...” menu.



In the window, you’re prompted to verify that the status is shown as connected and that the given IP is, for example, 10.0.0.10 (it could be 10.0.0.11, 10.0.0.12, or generically 10.0.0.x).



In Race Studio 3, flag the checkbox you find in Preferences.

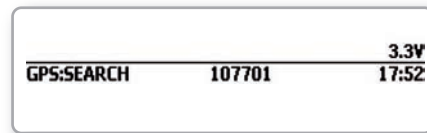


## 7. PC Connection

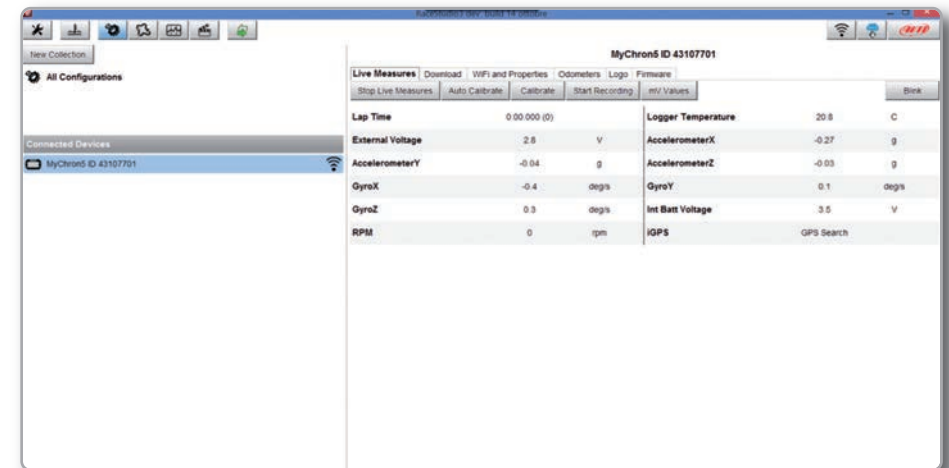
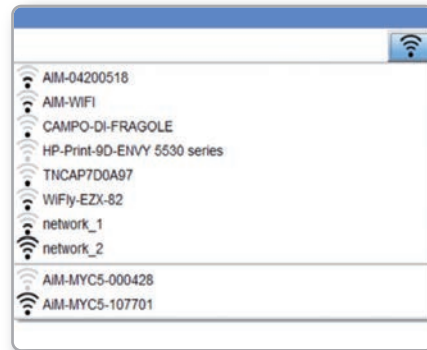
For establishing the WiFi connection with your PC:

■ Be sure your MyChron5 has the WiFi enabled (MyChron5 MENU / WiFi Menu / WiFi mode has to be ON)

■ Read the name of your MyChron5, available in the center of the lower row of the OnLine Page:



■ Click on the WiFi Icon of RaceStudio3 and select your MyChron5:



Once established the connection, the following features are available.

- OnLine
- Data Download
- Wifi and Properties
- Odometers Management
- Logo Management
- Firmware Information

The OnLine page lets you check all the MyChron5 channels.

Data Download is explained in **chapter 9**

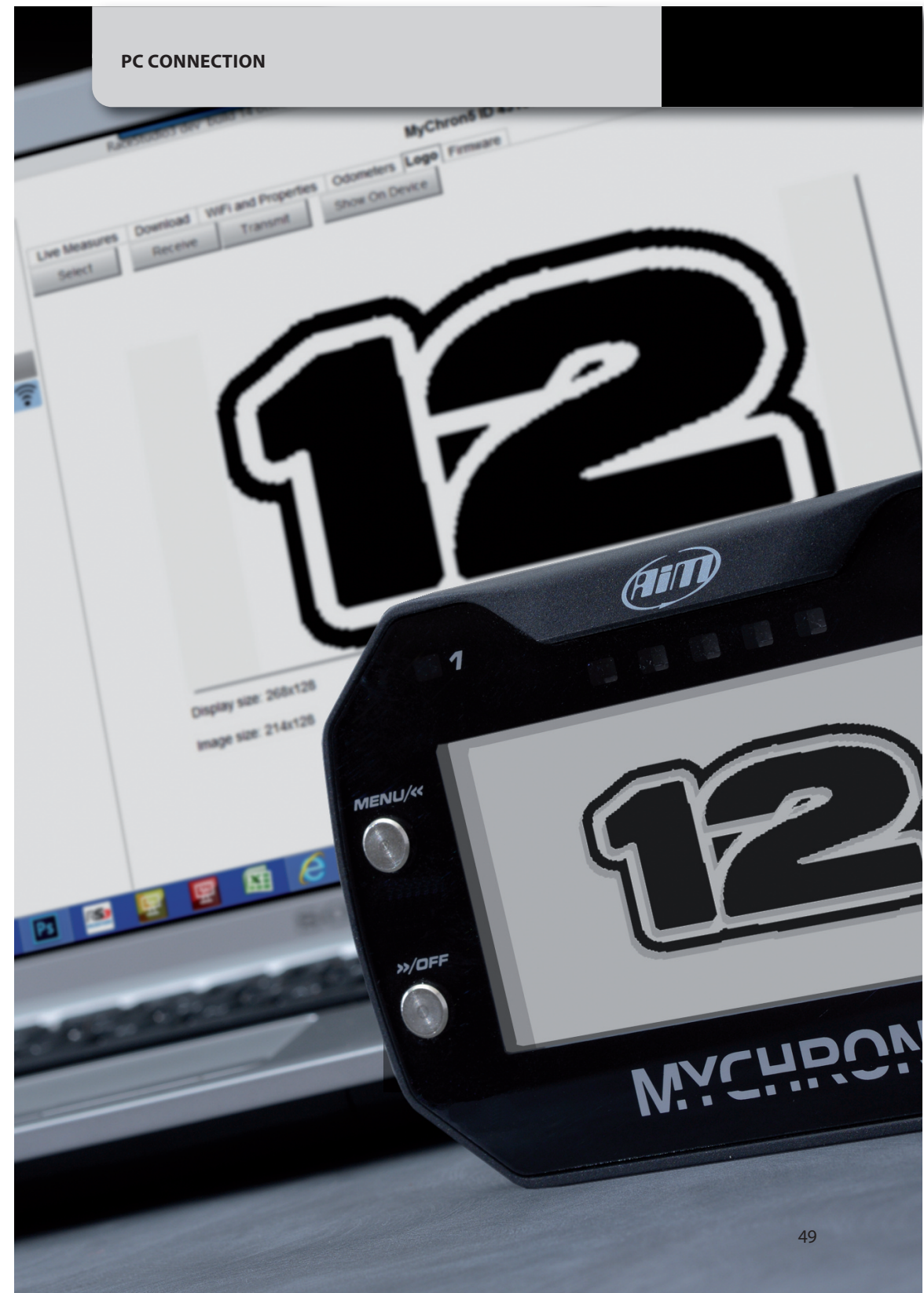
Odometers Management lets you set the name and reset the value of four different odometers.

Through Logo Management, you can change the logo that appears on the display when you turn your MyChron5 on.



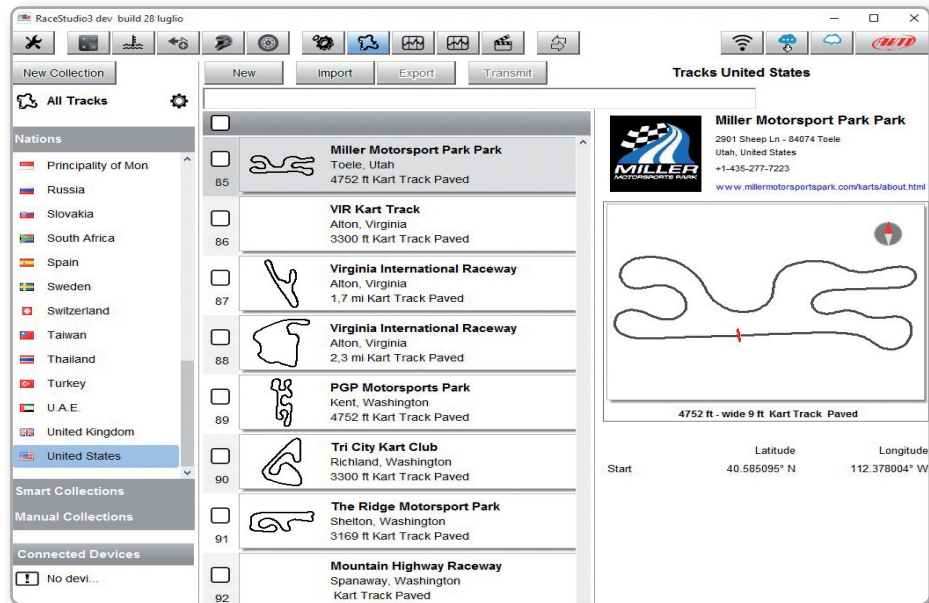


You can easily select a picture (JPEG or BMP) in your PC and transmit it to (or receive from) the MyChron5.



## 8. Track Management

Click on the Track icon to enter the Track Manager

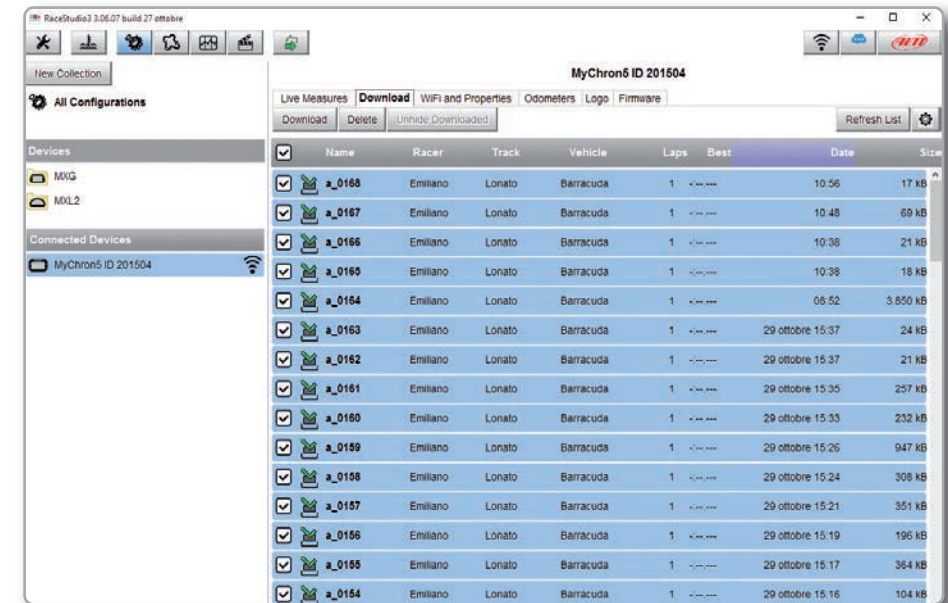


Through Track Manager it is possible to:

- Transmit and receive the track information to and from MyChron5
- create a new track to be written to the database
- modify the start / split points coordinates

For transmitting the tracks information to your MyChron5 you need to connect it to your PC through WiFi, select the desired tracks and click **TRANSMIT**, for drag and drop towards the MyChron5 icon.

## 9. Data Download

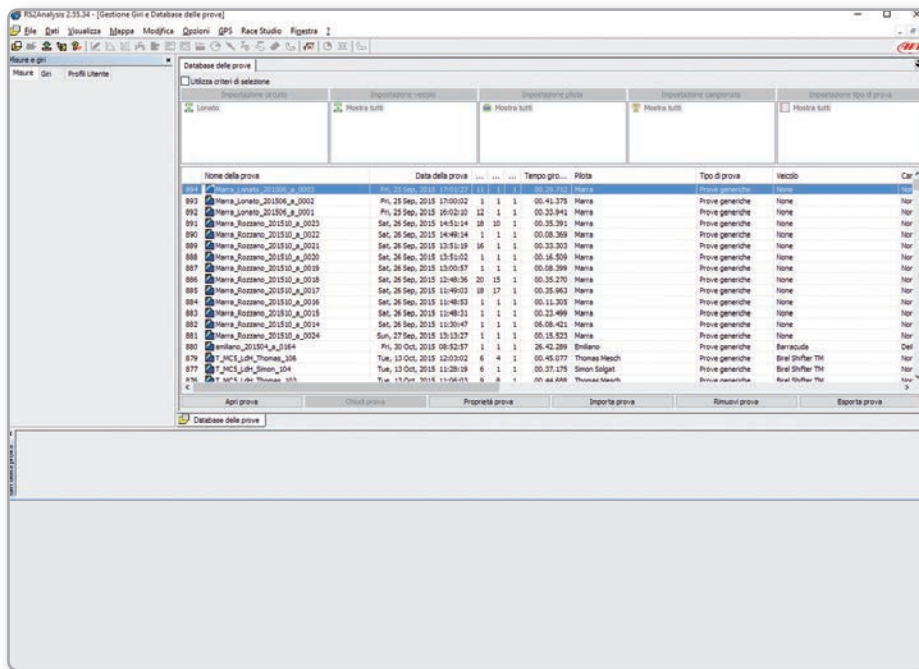


After having established the WiFi connection between your MyChron5 and the PC, press Download for downloading the data recorded. You will see the information about the files recorded in the system: number of laps, best lap time, date/time, and dimension of the file creation.

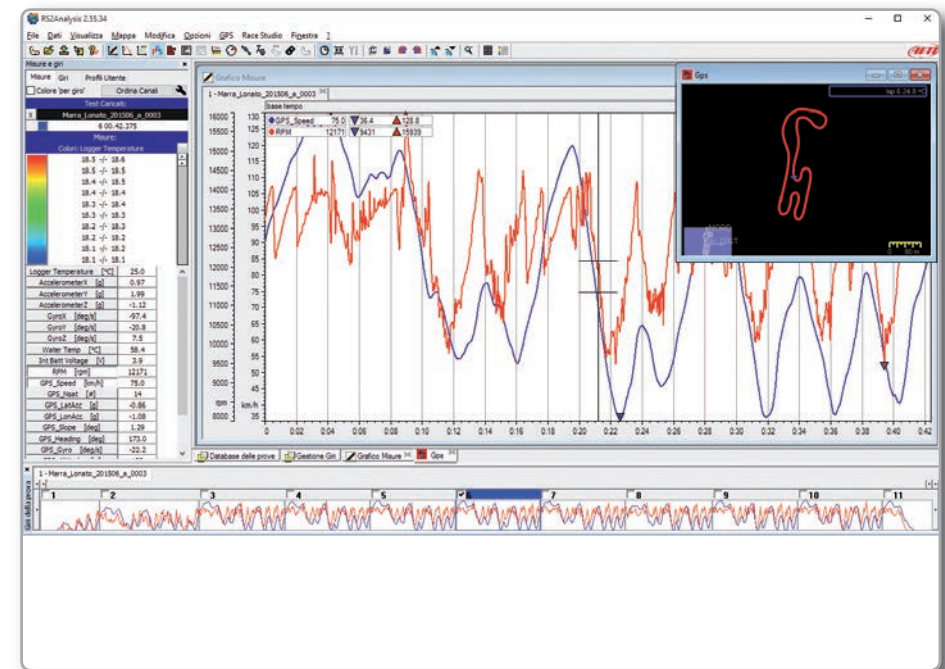
Please select one or more files and push Download for getting them into your PC for a deep analysis of them.

## 10. Data Analysis

After having downloaded your data, please click on the following icon for analyzing your data. This page will appear:



Please select your test and start analysis.



A lot of pages, graphs, and images that are useful for studying your data in the best way are available.

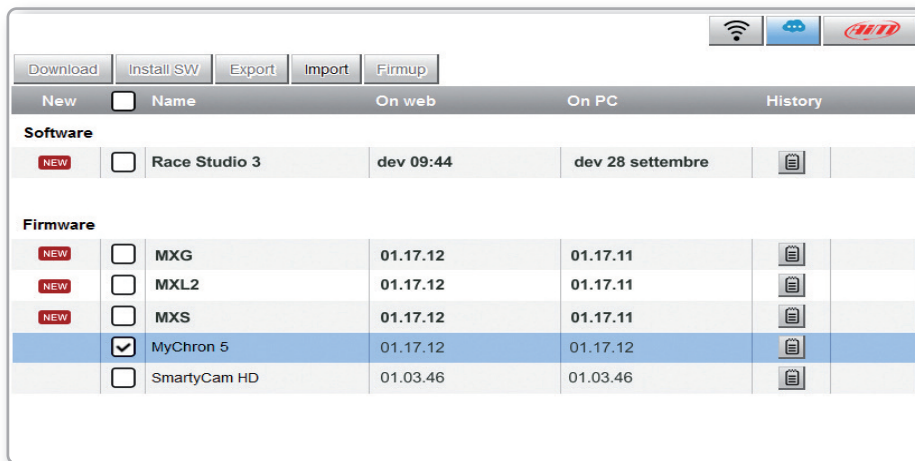


## 11. New Firmware and Software Releases

Our technicians and engineers are constantly working to improve both firmware (the program that resides inside your system) and software (the program that you run in your PC).

Every time a new firmware or software are available, an icon appears in your RaceStudio3 software:

Please click on it and freely download and install the new programs.



After downloading the MyChron5 firmware, you have to connect your MyChron5 to your PC via WiFi for executing the Firmup function.

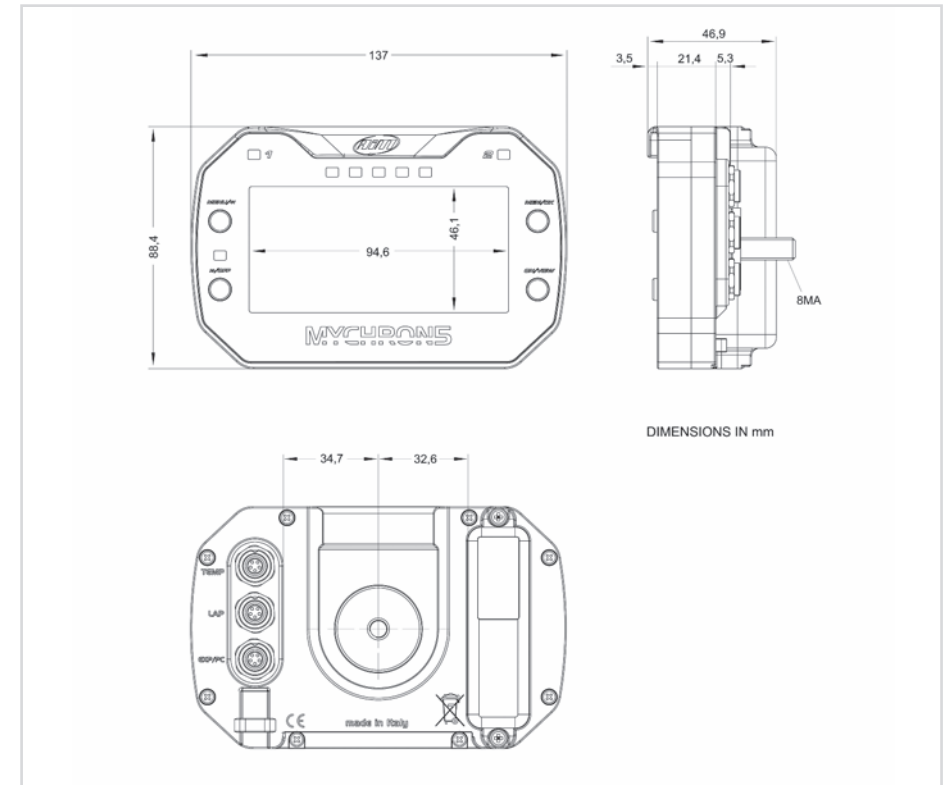
After a few seconds, your MyChron5 will be ready.





## MyChron5

■ Integrated GPS	10 Hz GPS + Glonass Constellations
■ RPM	Up to 25.000 RPM
■ Temperature	Thermocouple/ Thermoresistance
■ Lap time	GPS based (included) Optical or Magnetic receiver (optional)
■ WiFi connection to PC	Yes
■ Memory	4 Gb - more than 3.000 hours of continuous logging
■ Display resolution	268x128 pxl
■ Backlight	Multicolor
■ Alarms	2 Freely configurable RGB LEDs
■ ShiftLights	5 Freely configurable RGB LEDs
■ Battery	Rechargeable 3 Amp Lithium Ion
■ Battery duration	Up to 10 hours
■ Battery charger	Included
■ Body	Nylon fiberglass
■ Dimensions	137x88x30mm
■ Weight	390g battery included
■ Analysis software	Freely downloadable RaceStudio from <a href="http://www.aim-sportline.com">www.aim-sportline.com</a>



Our web site, [www.aim-sportline.com](http://www.aim-sportline.com) is constantly upgraded. Please, refer to it for downloading the last release of our documentation

